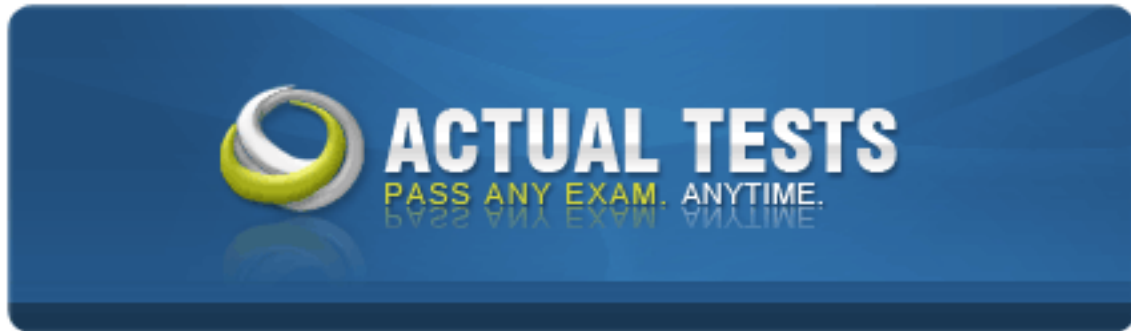


EMC E10-001



Information Storage and Management Exam Version 2

Version: 4.1

QUESTION NO: 1

Which cache management algorithm is based on the assumption that data will not be requested by the host when it has not been accessed for a while?

- A. LRU
- B. HWM
- C. LWM
- D. MRU

Answer: A

Explanation:

QUESTION NO: 2

What does the area ID of the FC address identify?

- A. Group of ports within a switch
- B. An individual port within a fabric
- C. Location of the name server within the fabric
- D. Unique number provided to each switch in the fabric

Answer: A

Explanation:

QUESTION NO: 3

An organization performs copy on first access (CoFA) replication to create a local replica of application data. To perform a successful restore, what should be considered?

- A. Source devices must be healthy
- B. Save location size must be larger than the size of all source devices
- C. Save location size must be equal to the size of all source devices
- D. All changes to the source and replica must be discarded before the restore starts

Answer: A

Explanation:

QUESTION NO: 4

Which host component eliminates the need to deploy separate adapters for FC and Ethernet communications?

- A. Converged network adapter
- B. TCP Offload Engine NIC
- C. FCIP bridging adapter
- D. iSCSI host bus adapter

Answer: A

Explanation:

QUESTION NO: 5

What is a function of unified management software in cloud computing?

- A. Defining cloud service attributes
- B. Consolidating infrastructure resources scattered across one or more data centers
- C. Metering based on usage of resources by the consumer
- D. Providing an interface to consumers to request cloud services

Answer: A

Explanation:

QUESTION NO: 6

Which EMC product provides the capability to recover data up to any point-in-time?

- A. RecoverPoint
- B. NetWorker
- C. Avamar
- D. Data Domain

Answer: A

Explanation:

QUESTION NO: 7

What is needed to perform a non-disruptive migration of virtual machines (VMs) between hypervisors?

- A. Hypervisors must have access to the same storage volume
- B. Physical machines running hypervisors must have the same configuration
- C. Hypervisors must be running within the same physical machine
- D. Both hypervisors must have the same IP address

Answer: A

Explanation:

QUESTION NO: 8

Which iSCSI name requires an organization to own a registered domain name?

- A. IQN
- B. EUI
- C. WWNN
- D. WWPN

Answer: A

Explanation:

QUESTION NO: 9

Which data center requirement refers to applying mechanisms that ensure data is stored and retrieved as it was received?

- A. Integrity
- B. Availability
- C. Security
- D. Performance

Answer: A

Explanation:

QUESTION NO: 10

What describes a landing zone in a disk drive?

- A. Area on which the read/write head rests
- B. Area where the read/write head lands to access data
- C. Area where the data is buffered before writing to platters
- D. Area where sector-specific information is stored on the disk

Answer: A

Explanation:

QUESTION NO: 11

What is a characteristic of unified storage?

- A. Supports multiple protocols for data access and managed through a single management interface
- B. Supports a common protocol for data access and managed through a unified management interface
- C. Provides compute, storage, and network virtualization products in one solution
- D. Stores all data in the form of objects and managed through a unified management interface

Answer: A

Explanation:

QUESTION NO: 12

What defines the time taken to position the read/write head across the platter with a radial movement in a disk drive?

- A. Seek time
- B. Rotational latency
- C. Data transfer time
- D. Service time

Answer: A

Explanation:

QUESTION NO: 13

What is a benefit of cloud computing over traditional computing?

- A. Reduces the time to provision and deploy new applications
- B. Eliminates consumer's IT operational expenditure
- C. Enables the use of proprietary APIs to access IT resources
- D. Lowers migration cost and prevents vendor lock-in

Answer: A

Explanation:

QUESTION NO: 14

Which statement describes a denial of service attack?

- A. Prevents authorized users from accessing the resources and services
- B. Prohibits attempts to repair the resources and services after an attack
- C. Attempts to provide false information by impersonating someone's identity
- D. Prevents unauthorized users to access the resources and services

Answer: A

Explanation:

QUESTION NO: 15

What is a key benefit of virtualization?

- A. Improved resource utilization
- B. Improved performance
- C. Enhanced interoperability
- D. Unlimited resource scaling

Answer: A

Explanation:

QUESTION NO: 16

What is an accurate statement about the Data Center Bridging Exchange protocol?

- A.** Enables Converged Enhanced Ethernet (CEE) devices to convey and configure their features with other CEE devices
- B.** Creates virtual FCoE links over an existing Ethernet network to transport FC frames over virtual links independently
- C.** Enables an FCoE switch to send signals to other FCoE switches that need to stop or slow down their transmissions
- D.** Enables an FCoE switch to transport both TCP/IP and FC frames over a single virtual FCoE link

Answer: B

Explanation:

QUESTION NO: 17

What is a key security consideration when a NAS device enables sharing of the same data among UNIX and Microsoft Windows users?

- A.** NAS device must map UNIX permissions to Windows and vice versa
- B.** NAS defines and maintains ownership to the objects
- C.** NIS server must separately maintain SIDs for UNIX and Windows environments
- D.** Object permissions are not defined in advance and assigned dynamically

Answer: A

Explanation:

QUESTION NO: 18

Which cloud computing characteristic enables consumers to grow and shrink the demand for resources dynamically?

- A.** Rapid elasticity
- B.** Resource pooling
- C.** Measured service
- D.** On-demand self-service

Answer: A

Explanation:

QUESTION NO: 19

Which operation is performed while creating a VM snapshot?

- A. Create a delta file to record changes to the virtual disk since the session is activated
- B. Capture the configuration data of a VM to create an identical copy of the VM
- C. Create a journal volume to update changes to the snapshot
- D. Create a "Gold" copy of the snapshot before copying changes to the virtual disk

Answer: A

Explanation:

QUESTION NO: 20

Which cloud computing capability enables monitoring and reporting resource usage?

- A. Metering
- B. Pooling
- C. Self-service requesting
- D. Publishing

Answer: A

Explanation:

QUESTION NO: 21

In the context of protecting the FC SAN infrastructure, what is an example of infrastructure integrity?

- A. Preventing node login to the fabric without proper authorization
- B. Implementing iSNS discovery domains
- C. Implementing an FSPF algorithm to create a virtual SAN
- D. Not permitting physical segmentation of nodes

Answer: A

Explanation:

QUESTION NO: 22

What is true about parity-based RAID?

- A. Parity is updated each time a write is performed
- B. Parity is read each time a read is performed
- C. Parity is updated only when writes fill a stripe
- D. Parity is updated each time when both reads and writes are performed

Answer: A

Explanation:

QUESTION NO: 23

What is an accurate statement about a gateway NAS solution?

- A. NAS head and storage are managed independently
- B. Consolidates file-level and block-level access on a single storage platform
- C. Provides integrated management for both NAS head and storage
- D. Creates a single file system that runs on all NAS heads

Answer: A

Explanation:

QUESTION NO: 24

What is prevented using RAID technology?

- A. Data loss
- B. Host Bus Adapter failures
- C. Security breach
- D. Switch failure

Answer: A

Explanation:

QUESTION NO: 25

Which process minimizes the exposure to a loss of uncommitted cached data when there is a power failure?

- A. Cache vaulting
- B. Cache mirroring
- C. Low watermarking
- D. Prefetching

Answer: A

Explanation:

QUESTION NO: 26

What are the three elements of the risk triad from an information security perspective?

- A. Assets, threats, and vulnerabilities
- B. Actions, threats, and vulnerabilities
- C. Assets, threats, and countermeasures
- D. Assets, countermeasures, and vulnerabilities

Answer: A

Explanation:

QUESTION NO: 27

Which cloud computing characteristic enables consumers to request resources using a service catalog through a web-based user interface?

- A. On-demand self-service
- B. Broad network access
- C. Metered services
- D. Catalog management

Answer: A

Explanation:

QUESTION NO: 28

What is a purpose for distributing Switch Registered State Change Notifications (SW-RSCNs) in a fabric?

- A. Updates the name server on all switches in the fabric
- B. Stops or slows down transmissions from other switches in the fabric
- C. Distributes configuration values and congestion notifications across the fabric
- D. Exchanges requests for change notifications among distributed management servers

Answer: A

Explanation:

QUESTION NO: 29

In the Fibre Channel protocol, what are functions of the FC-1 layer?

- A. Encoding and decoding
- B. Routing and flow control
- C. Interface mapping and flow control
- D. Transmission of raw bits and encoding

Answer: A

Explanation:

QUESTION NO: 30

What is a security implementation in NAS environments?

- A. Kerberos
- B. Port binding
- C. S_ID Lockdown
- D. FC-SP

Answer: A

Explanation:

QUESTION NO: 31

In an FC SAN environment, what is a benefit of zoning?

- A. Restricts RSCN traffic
- B. Isolates fabric services

- C. Enables online volume expansion
- D. Provides non-disruptive data migration

Answer: A

Explanation:

QUESTION NO: 32

What is the RAID 5 write penalty for random, small write I/Os?

- A. 1
- B. 2
- C. 4
- D. 6

Answer: C

Explanation:

QUESTION NO: 33

Which EMC block-level storage virtualization product enables hosts from two different data centers to access a single copy of data?

- A. VPLEX
- B. VMAX
- C. VNX
- D. Vblock

Answer: A

Explanation:

QUESTION NO: 34

Which EMC product enables VNX array-based remote replication from a primary volume to a secondary volume residing on a different VNX storage system?

- A. MirrorView
- B. SnapView

- C. RepliStor
- D. SRDF

Answer: A

Explanation:

QUESTION NO: 35

A customer has a requirement to perform a backup each night. However, the customer has a limited amount of time for backups to run on week nights, Monday through Friday evenings.

Which backup granularity type is recommended to meet the backup window for those nights?

- A. Incremental
- B. Cumulative
- C. Full
- D. Differential

Answer: A

Explanation:

QUESTION NO: 36

What is a characteristic of a scale-out NAS?

- A. File system grows dynamically as nodes are added in the cluster
- B. Up to four file systems can be created across the cluster
- C. Distinct file systems are created on each node in the cluster
- D. Different file systems can be mixed on each node in a single cluster

Answer: A

Explanation:

QUESTION NO: 37

In a Microsoft Windows file sharing environment, what is a function of system access control lists (SACL)?

- A. Determines object access information that needs to be audited
- B. Provides information on system access troubleshooting
- C. Uniquely identifies objects, users, and user groups
- D. Provides path name to access both inbound and outbound traffic

Answer: A

Explanation:

QUESTION NO: 38

What is an advantage of synchronous remote replication compared to other remote replication methods?

- A. Near zero RPO
- B. Near zero RTO
- C. No distance limitation
- D. Faster response time

Answer: A

Explanation:

QUESTION NO: 39

What is an advantage of sub-LUN tiering?

- A. Improved performance
- B. Enhanced reliability and availability
- C. Dynamic expansion of storage capacity
- D. Faster provisioning of thin LUNs

Answer: A

Explanation:

QUESTION NO: 40

Which fabric service is responsible for managing and distributing Registered State Change Notifications (RSCNs) to attached node ports?

- A. Fabric controller
- B. Name server
- C. Fabric login server
- D. Management server

Answer: A

Explanation:

QUESTION NO: 41

Which SAN security mechanism will prevent a switch port from being enabled even after a switch reboot?

- A. Persistent Port Disable
- B. Port Binding
- C. Port Lockdown
- D. Persistent Switch Disable

Answer: A

Explanation:

QUESTION NO: 42

What does a block map contain in a file system snapshot?

- A. Address from which data is to be read when accessing the snapshot
- B. Original data when a write is issued to the target for the first time
- C. Blocks that have changed since the creation of the snapshot
- D. Blocks that have been modified in either the source or the target

Answer: A

Explanation:

QUESTION NO: 43

What describes a full mesh topology?

- A. All switches are directly connected to each other

- B. Consists of core and edge switch tiers
- C. Requires four switches
- D. Requires two ISL hops for host to storage traffic

Answer: A

Explanation:

QUESTION NO: 44

What is a characteristic of pointer-based virtual replication?

- A. Replica is immediately available after activation of a replication session
- B. Replica device is at least as large as the source device
- C. Replica is available only after detachment from the source
- D. Source does not need to be healthy for the restore

Answer: A

Explanation:

QUESTION NO: 45

When using the image-based backup approach to backup a virtual machine, where does the backup client run?

- A. Proxy server
- B. Hypervisor
- C. Virtual machine
- D. Backup device

Answer: A

Explanation:

QUESTION NO: 46

Which NAS implementation consolidates file-based and block-based access on a single storage platform?

- A. Unified

- B. Scale-out
- C. Gateway
- D. Integrated

Answer: A

Explanation:

QUESTION NO: 47

Which data deduplication method increases the chance of identifying duplicate data even when there is only a minor difference between two documents?

- A. Variable-length segment
- B. Single-instance
- C. File level
- D. Fixed-block

Answer: A

Explanation:

QUESTION NO: 48

Which operation is performed by an FCoE switch when it receives a frame with an FCoE Ethertype?

- A. Switch recognizes that the frame contains an FC payload and forwards it to the FC Forwarder
- B. Switch recognizes the frame as Ethernet and forwards it to the Ethernet bridge
- C. Switch recognizes the frame as FCoE and forwards it to the Ethernet bridge
- D. Switch recognizes that the frame contains an Ethernet payload and forwards it to the FC Forwarder

Answer: B

Explanation:

QUESTION NO: 49

What is a key advantage of data striping across multiple disks as compared to a single disk?

- A. Performance
- B. Space utilization
- C. Protection
- D. Capacity

Answer: A

Explanation:

QUESTION NO: 50

Which EMC product is a disk-based backup and recovery solution and provides source-based data deduplication?

- A. Avamar
- B. Data Domain
- C. NetWorker
- D. SourceOne

Answer: A

Explanation:

QUESTION NO: 51

Click on the calculator icon in the upper left corner.

When a service is described as "three 9s available", what is the approximate amount of downtime allowed per week?

- A. 10 seconds
- B. 10 minutes
- C. 10 hours
- D. 10 days

Answer: B

Explanation:

QUESTION NO: 52

Click on the calculator icon in the upper left corner.

A customer's application uses five, 10 GB devices. A full volume local replica of the application is required every 4 hours. The customer requires each replica to be kept for 24 hours.

In this situation, how many replica devices are required?

- A. 5
- B. 20
- C. 30
- D. 50

Answer: C

Explanation:

QUESTION NO: 53

What is a characteristic of an FC-SW implementation?

- A. Provides a dedicated path between nodes
- B. Nodes arbitrate to gain control of the data path to transfer data
- C. Only one node can perform an I/O operation at a time
- D. Supports up to 126 nodes

Answer: A

Explanation:

QUESTION NO: 54

Which functionality is offered by user access management software?

- A. Provides a user interface to browse the service catalog and request cloud services
- B. Enables a user to create VMs and allocate them to CPU, memory, and storage capacity
- C. Provides a user interface to view a consolidated view of existing physical and virtual infrastructures across data centers
- D. Allows a user to monitor performance, capacity, and availability of physical and virtual resources centrally

Answer: A

Explanation:

QUESTION NO: 55

What are the key components of an intelligent storage system?

- A. Front-end, cache, back-end, and physical disks
- B. Host, connectivity, back-end, and storage array
- C. Switch, ports, back-end, and physical disks
- D. Host, LUNs, cache, and physical disks

Answer: A

Explanation:

QUESTION NO: 56

A customer requires additional storage capacity. The storage expansion must be fast and performance is not a constraint. What is the most appropriate LUN expansion method?

- A. Concatenated metaLUN
- B. Striped metaLUN
- C. Base LUN
- D. Component LUN

Answer: A

Explanation:

QUESTION NO: 57

Which iSCSI discovery mechanism requires manual configuration of the initiator with the target's network portal?

- A. SendTargets discovery
- B. iSCSI service location discovery
- C. Internet Storage Name Service
- D. iSCSI domain name discovery

Answer: A

Explanation:

QUESTION NO: 58

What is a characteristic of asynchronous remote replication?

- A. Only the last update is transmitted if there are multiple writes to the same location in the buffer
- B. Writes are committed to the target before being committed to the source
- C. Reads are always serviced from the target replica
- D. Distance between the two sites is restricted to less than 200 km

Answer: A

Explanation:

QUESTION NO: 59

What is a characteristic of Big Data?

- A. Structured and unstructured data generated by multiple sources
- B. Structured data generated by a single source
- C. Only unstructured data generated by multiple sources
- D. Structured and unstructured data generated by a single source

Answer: A

Explanation:

QUESTION NO: 60

Click on the calculator icon in the upper left corner.

A stripe depth of 64 KB has been assigned to a five-disk RAID 0 set. What is the stripe size?

- A. 64 KB
- B. 128 KB
- C. 256 KB
- D. 320 KB

Answer: D

Explanation:

QUESTION NO: 61

A user tries to update the content of a file stored on a CAS system. What is the result of this operation?

- A. CAS generates a new address for the altered content and stores it as a new object
- B. CAS uses the same content address for the altered content and the original content
- C. CAS overwrites the original content and generates a new content address
- D. CAS overwrites the original content but the content address is preserved

Answer: A

Explanation:

QUESTION NO: 62

Which EMC product provides target-based deduplication?

- A. Data Domain
- B. Avamar
- C. NetWorker
- D. RecoverPoint

Answer: A

Explanation:

QUESTION NO: 63

What are the two mechanisms that can be employed to address threats of user identity spoofing?

- A. User authentication and user authorization
- B. Access Control Lists (ACLs) and access control to storage objects
- C. Access control to storage objects and auditing
- D. User authentication and Information Rights Management (IRM)

Answer: A

Explanation:**QUESTION NO: 64**

What is the function of enhanced transmission selection in an FCoE environment?

- A.** Provides available bandwidth to other classes of traffic when a particular class of traffic does not use its allocated bandwidth
- B.** Provides the capability to independently pause transmission of FCoE frames over each virtual link
- C.** Enables an FCoE switch to send a signal to other FCoE switches that need to stop or slow down their transmissions
- D.** Allows an FCoE switch to distribute configuration parameters to the converged network adapters

Answer: A

Explanation:**QUESTION NO: 65**

Which benefit is provided by EMC PowerPath?

- A.** Dynamic load balancing
- B.** Deduplication of network traffic
- C.** Multiplexing host traffic
- D.** Segmentation of fabric to create VSANs

Answer: A

Explanation:**QUESTION NO: 66**

In a CAS environment, what is used to generate a content address?

- A.** Binaries of the data
- B.** Combination of data and metadata of the object
- C.** Location of the object
- D.** Object metadata

Answer: A

Explanation:

QUESTION NO: 67

Click on the calculator icon in the upper left corner.

An application uses 20, 10 GB devices. A pointer-based full volume replica of the application is required every 6 hours. Each replica will be kept for 24 hours. The data changes by 10% every 4 hours.

How many replica devices are required?

- A. 20
- B. 60
- C. 80
- D. 120

Answer: C

Explanation:

QUESTION NO: 68

Which iSCSI naming feature uses a 16-character hexadecimal string?

- A. EUI
- B. IQN
- C. iSNS
- D. ARP

Answer: A

Explanation:

QUESTION NO: 69

What describes a repudiation attack?

- A. An attempt to compromise accountability goals of the security
- B. Stealing a private key to decrypt the data-in-transit
- C. Unauthorized access to information to compromise confidentiality
- D. A series of repetitive attacks to the physical information infrastructure

Answer: A

Explanation:

QUESTION NO: 70

Click on the calculator icon in the upper left corner.

A department within an organization requires 200 GB of storage for their business application. The production LUN is RAID 1+0 protected and has a local and remote replica. The local replica is on a RAID 1 LUN and the remote replica is on a five-disk RAID 5 LUN.

If the cost per GB of storage is \$2.00, what is the chargeback cost to the department for application storage?

- A. \$1050
- B. \$1500
- C. \$2100
- D. \$2900

Answer: C

Explanation:

QUESTION NO: 71

What is a characteristic of an FC-AL implementation?

- A. Reserves one address for connecting an FC-SW port
- B. Supports connectivity up to 15 million nodes
- C. Devices can be added and removed dynamically without any impact
- D. Requires at least one connectivity device

Answer: A

Explanation:

QUESTION NO: 72

Which iSCSI host connectivity option is recommended in a CPU-intensive application environment?

- A. iSCSI HBA
- B. NIC with software-based iSCSI initiator
- C. TCP offload engine
- D. Converged Network Adapter

Answer: A

Explanation:

QUESTION NO: 73

What is a characteristic of an enterprise flash drive?

- A. Uses semiconductor-based solid state media
- B. Performs data search and retrieval sequentially
- C. Performs rotational speed at more than 30000 rpm
- D. Writes once and reads many

Answer: A

Explanation:

QUESTION NO: 74

What defines the time taken to position the sector on the platter under the read/write head?

- A. Rotational delay
- B. Seek time
- C. Response time
- D. Data transfer rate

Answer: A

Explanation:

QUESTION NO: 75

What is true about cache dirty page?

- A. Data that has changed but is not yet written to disk
- B. Data read from disk but not accessed by the host
- C. Data that has changed and has been written to disk
- D. Data requested by the host but not yet fetched

Answer: C

Explanation:

QUESTION NO: 76

As your organization's SAN environment grows, you realize there is a greater need to manage SAN security. Which mechanism is required to prevent unauthorized activity on the FC fabric for management operations?

- A. Role-based access control
- B. Access control lists
- C. VSAN
- D. Zoning

Answer: A

Explanation:

QUESTION NO: 77

Which operation is performed by a scale-out NAS when it receives a large write I/O from its clients?

- A. I/O is striped across multiple nodes for processing
- B. I/O is sent to the high performance node in the cluster for processing
- C. A new node is dynamically added to the cluster to process the I/O
- D. I/O is sent to the high storage capacity node in the cluster for processing

Answer: A

Explanation:

QUESTION NO: 78

When developing a disaster recovery plan, what is the result of choosing a particular recovery time objective for a system?

- A. Determines the type and location of the backup media
- B. Determines how often to take a backup of the system
- C. Determines how long to retain backup copies
- D. Determines how many transaction logs should be backed up

Answer: A

Explanation:

QUESTION NO: 79

Which operation writes data in cache, and immediately to disk, before sending an acknowledgement to the host?

- A. Write-through cache
- B. Write-back cache
- C. Write aside cache
- D. Write cache vaulting

Answer: A

Explanation:

QUESTION NO: 80

What is a benefit of WWN zoning over port zoning?

- A. A server, after being moved to another switch port in the fabric, maintains connectivity to its zone partners without the need to modify the zoning configuration.
- B. A server, after replacement of its HBAs, maintains connectivity to its zone partners without the need to modify the zoning configuration.
- C. A server, after replacement of its HBAs, does not require performing a fabric login to maintain connectivity to its zone partners.
- D. A server, after being moved to another fabric, maintains connectivity to its zone partners without the need to modify the zoning configuration.

Answer: A

Explanation:

QUESTION NO: 81

Click on the calculator icon in the upper left corner.

A department conducts business, Monday through Saturday from 9 A.M. to 5 P.M. each day. The department takes in revenue on an average of \$500,000 per week. Employee salaries are approximately \$5,000 per week. The department requires the use of a computer system with an RPO of 2 hours and an RTO of 4 hours.

To determine the business impact of downtime, what is the average cost of downtime per hour of the business?

- A. \$10,417
- B. \$10,521
- C. \$11,105
- D. \$12,024

Answer: A

Explanation:

QUESTION NO: 82

In Kerberos authentication, what is a role of the Active Directory?

- A. Verifies the user's login information
- B. Implements the Authentication service and Ticket Granting service
- C. Verifies the session ID when the client-server session is established
- D. Maintains the access control list in a keytab file

Answer: A

Explanation:

QUESTION NO: 83

A finance department wants to secure its data while the data traverses over the FC SAN. Currently the SAN is also used by other departments in the organization.

Which implementation should be recommended to isolate other department traffic from the finance department traffic?

- A. Virtual SAN
- B. Virtual LAN
- C. Fabric binding
- D. Port binding

Answer: A

Explanation:

QUESTION NO: 84

Which data center characteristic refers to the capability to grow resources without impacting business operations?

- A. Scalability
- B. Security
- C. Availability
- D. Performance

Answer: A

Explanation:

QUESTION NO: 85

What is an advantage of reporting on storage arrays?

- A. Planning for capacity
- B. Monitoring the number of arrays
- C. Monitoring the number of disks in a RAID group
- D. Planning for storage groups

Answer: B

Explanation:

QUESTION NO: 86

A customer wants to connect iSCSI-enabled hosts to an existing Fibre Channel (FC) storage array. Which networking device enables the connectivity between the host and the storage array?

- A. iSCSI gateway
- B. FCIP bridge
- C. FC gateway
- D. IP router

Answer: A

Explanation:

QUESTION NO: 87

What is a benefit of virtual storage provisioning over traditional provisioning?

- A. Enables more efficient allocation of storage to hosts
- B. Can be used for applications that require predictable performance
- C. Provides full control for precise data placement
- D. Does not enable oversubscription

Answer: A

Explanation:

QUESTION NO: 88

What accurately describes a Vblock?

- A. Cloud infrastructure package
- B. Block-based storage device
- C. SMI specification
- D. Virtual tape library

Answer: A

Explanation:

QUESTION NO: 89

Which report provides information about the allocation and utilization of storage infrastructure

components by various departments or user groups?

- A. Chargeback
- B. Capacity Planning
- C. Configuration and Asset Management
- D. Service Management

Answer: A

Explanation:

QUESTION NO: 90

Which component of an archiving solution is responsible for scanning data that can be archived based on a policy?

- A. Archiving agent
- B. Archiving server
- C. Archiving policy server
- D. Archiving storage device

Answer: A

Explanation:

QUESTION NO: 91

What describes a hybrid cloud?

- A. Composed of distinct clouds that are bound together by standardized or proprietary technology
- B. Composed of two or more distinct data centers that enable data and application portability
- C. Combination of two distinct cloud infrastructures (on-premise and externally-hosted) that are managed together
- D. Combination of a private cloud and a public cloud that are owned, managed, and operated by a single organization

Answer: A

Explanation:

QUESTION NO: 92

What is a requirement for a native iSCSI implementation?

- A. Host with an iSCSI HBA and an array with an iSCSI port
- B. Host with a NIC and an array with an FCoE port
- C. Host with iSCSI initiator software and an array with an FCIP port
- D. Host with an iSCSI HBA and an array with an FC port

Answer: A

Explanation:

QUESTION NO: 93

In addition to applications and databases, what are the other core elements of a data center infrastructure?

- A. JBOD, networks, and storage arrays
- B. Servers/operating systems, DAS, and NAS
- C. Servers/operating systems, networks, and storage arrays
- D. Servers/operating systems, SAN, and JBOD

Answer: C

Explanation:

QUESTION NO: 94

Why does a restore operation need to communicate with the backup server?

- A. Locate the data to be restored using the backup catalog
- B. Determine the RTO of the backup save set
- C. Run the restore automatically according to a schedule
- D. Determine the RPO of the backup save set

Answer: A

Explanation:

QUESTION NO: 95

Which data protection technology provides the highest degree of protection against logical

corruption and a near-zero RPO?

- A. CDP
- B. Mirroring
- C. Backup-to-disk
- D. Snapshots with CoFW

Answer: A

Explanation:

QUESTION NO: 96

Which remote replication solution has the highest bandwidth requirements?

- A. Array-based synchronous
- B. Array-based disk buffered
- C. Host-based asynchronous LVM mirroring
- D. Log shipping over IP networks

Answer: A

Explanation:

QUESTION NO: 97

In a Fibre Channel (FC) SAN, which protocol implementation is used?

- A. SCSI over FC
- B. SCSI over FCoE
- C. FC over iSCSI
- D. FC over SCSI

Answer: C

Explanation:

QUESTION NO: 98

Which NAS backup environment transfers data to be backed up over a private backup network?

- A. NDMP three-way
- B. NDMP two-way
- C. Server-based
- D. Serverless

Answer: A

Explanation:

QUESTION NO: 99

Which three subject areas, taken together, define storage security?

- A. Information, networking, and storage
- B. Access control, storage, and encryption
- C. Access control, information, and networking
- D. Application, management, and backup

Answer: A

Explanation:

QUESTION NO: 100

Click on the calculator icon in the upper left corner.

If a disk drive's rotational speed is 10000 revolutions per minute, what is its average rotational latency?

- A. 0.003 milliseconds
- B. 0.05 milliseconds
- C. 3 milliseconds
- D. 5 milliseconds

Answer: C

Explanation:

QUESTION NO: 101

In the context of information security, which attribute other than individual identity and group

membership can be used to restrict unauthorized access?

- A. Role
- B. Cryptography
- C. World Wide Name
- D. Host network address

Answer: A

Explanation:

QUESTION NO: 102

What is a characteristic of an active/passive storage array configuration?

- A. Read and write I/Os are performed only through the controller that manages the LUN
- B. Host can perform I/Os to its LUNs through any of the available controllers
- C. Read and write I/Os are performed only through active cache
- D. Passive array is used for backup; active array is used for production data

Answer: A

Explanation:

QUESTION NO: 103

Click on the calculator icon in the upper left corner.

An eight-disk RAID 6 set has a stripe size of 192 KB. What is the stripe depth?

- A. 24 KB
- B. 32 KB
- C. 48 KB
- D. 64 KB

Answer: B

Explanation:

QUESTION NO: 104

What is a key benefit of RAID 5 compared to RAID 1+0 for small, random I/Os?

- A. Improved storage space utilization
- B. Improved write performance
- C. Higher availability
- D. Faster rebuild times after failure

Answer: A

Explanation:

QUESTION NO: 105

What is a characteristic of asynchronous remote replication?

- A. Replica will be behind the source by at least the size of the buffer
- B. A near-zero RPO disaster recovery solution
- C. Write must be committed at the target before being acknowledged as complete
- D. Deployed only for distances within 200 km between two sites

Answer: A

Explanation:

QUESTION NO: 106

What is a characteristic of triangle/multitarget replication?

- A. Failover can occur to either of the two remote sites
- B. Distance between all sites must be less than 125 km
- C. Bunker site must be in sync with the remote site at all times
- D. Only the production site is available during normal operations

Answer: A

Explanation:

QUESTION NO: 107

What is a characteristic of cloud-optimized storage?

- A. Secure multitenancy
- B. Single access mechanism
- C. Server-centric
- D. Native source-based deduplication

Answer: A

Explanation:

QUESTION NO: 108

In what way does an integrated NAS solution differ from a Gateway NAS solution?

- A. Integrated NAS manages storage devices through NAS software.
Gateway NAS relies on storage array management software to manage storage devices.
- B. Integrated NAS allows both file and block level access to the clients.
Gateway NAS allows only block level access to the clients.
- C. Integrated NAS utilizes specialized operating systems.
Gateway NAS utilizes generic operating systems.
- D. Integrated NAS uses Fibre Channel disks only.
Gateway NAS uses both Fibre Channel and SATA disks.

Answer: A

Explanation:

QUESTION NO: 109

What is the name of the drive sub-assembly which contains the platters and read/write heads?

- A. ATA
- B. SATA
- C. HDA
- D. IDE

Answer: C

Explanation:

QUESTION NO: 110

Why would an iSCSI solution be implemented?

- A. All storage arrays supply GigE ports
- B. Block storage over IP is much faster than FC
- C. iSCSI HBAs are inexpensive
- D. Leverage existing IP network infrastructures

Answer: D

Explanation:

QUESTION NO: 111

Click on the calculator icon in the upper left corner.

An application requires 3.5 TB of capacity. The application generates 2300 IOPS to disks during peak workloads. The vendor indicates that a 146 GB, 15K rpm drive is capable of performing a maximum of 150 IOPS.

How many disks are required to meet both capacity and performance requirements?

- A. 15
- B. 22
- C. 24
- D. 60

Answer: C

Explanation:

QUESTION NO: 112

Which two mechanisms address threats of elevating user privileges in the application access domain?

- A. Authentication and authorization
- B. Access control to storage objects and Access Control Lists (ACLs)
- C. Access control to storage objects and auditing
- D. User authentication and Information Rights Management (IRM)

Answer: A

Explanation:

QUESTION NO: 113

A customer has an existing SAN environment. The customer wants to add NAS to share the storage space. Which solution is most appropriate?

- A. Gateway NAS
- B. Scale-out NAS
- C. FCoE SAN
- D. IP SAN

Answer: A

Explanation:

QUESTION NO: 114

What is characteristic of a virtual tape library?

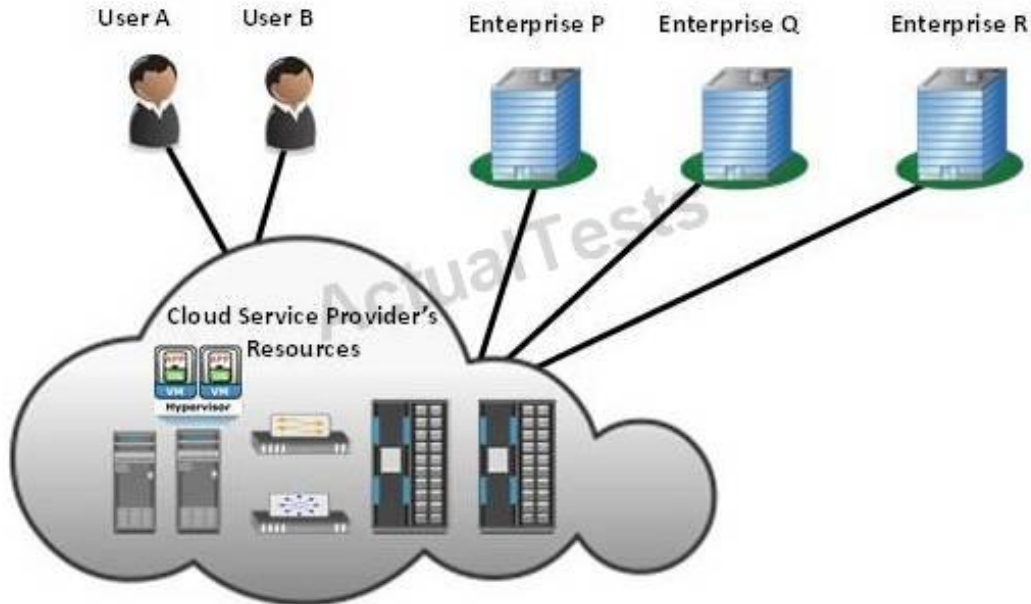
- A. Uses disk drives as backup media
- B. Requires changes on the backup software
- C. A virtual tape cannot span multiple LUNs
- D. Uses a special mechanism to address the 'shoe-shining' effect

Answer: A

Explanation:

QUESTION NO: 115

Refer to Exhibit:



Which type of cloud deployment model is represented in the exhibit?

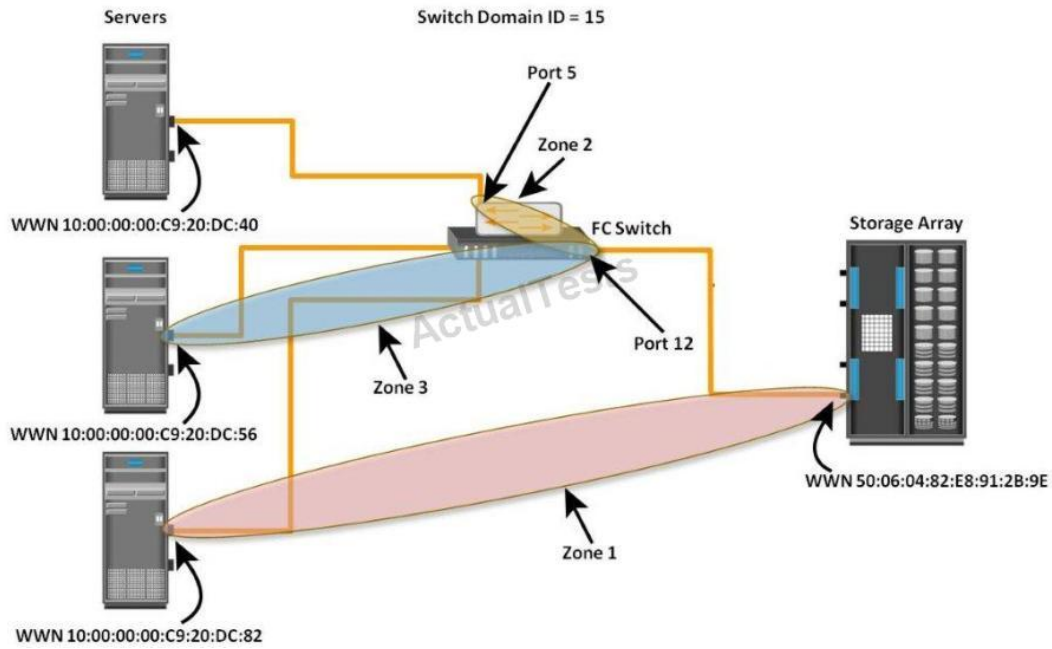
- A. Public
- B. Private
- C. Community
- D. Hybrid

Answer: A

Explanation:

QUESTION NO: 116

Based on the exhibit,



which zone(s) represent port zoning?

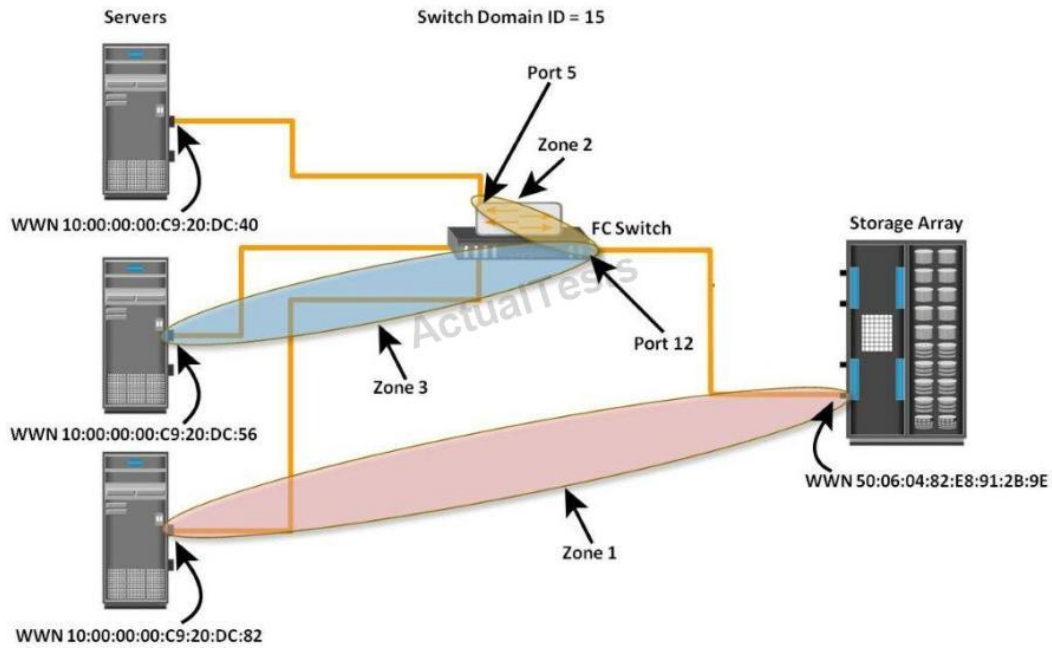
- A. Zone 1
- B. Zones 1 and 3
- C. Zone 2
- D. Zone 3

Answer: C

Explanation:

QUESTION NO: 117

Based on the exhibit,



which zone(s) represent mixed zoning?

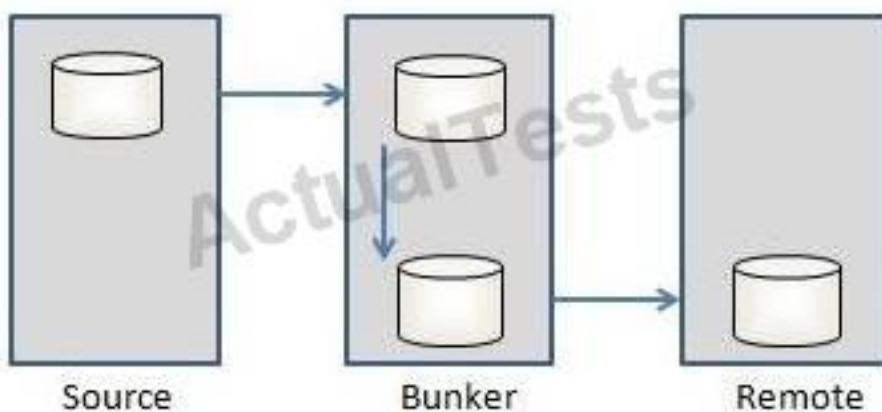
- A. Zone 1
- B. Zones 1 and 2
- C. Zone 2
- D. Zone 3

Answer: D

Explanation:

QUESTION NO: 118

Refer to Exhibit:



Which type of replication is represented in the exhibit?

- A. Cascade/multihop, synchronous + disk buffered
- B. Cascade/multihop, synchronous + asynchronous
- C. Triangle/multitarget, synchronous + disk buffered
- D. Triangle/multitarget, synchronous + differential resync

Answer: A

Explanation:

QUESTION NO: 119 DRAG DROP

A scheduled backup has been started. What is the correct sequence of steps for the backup operation?

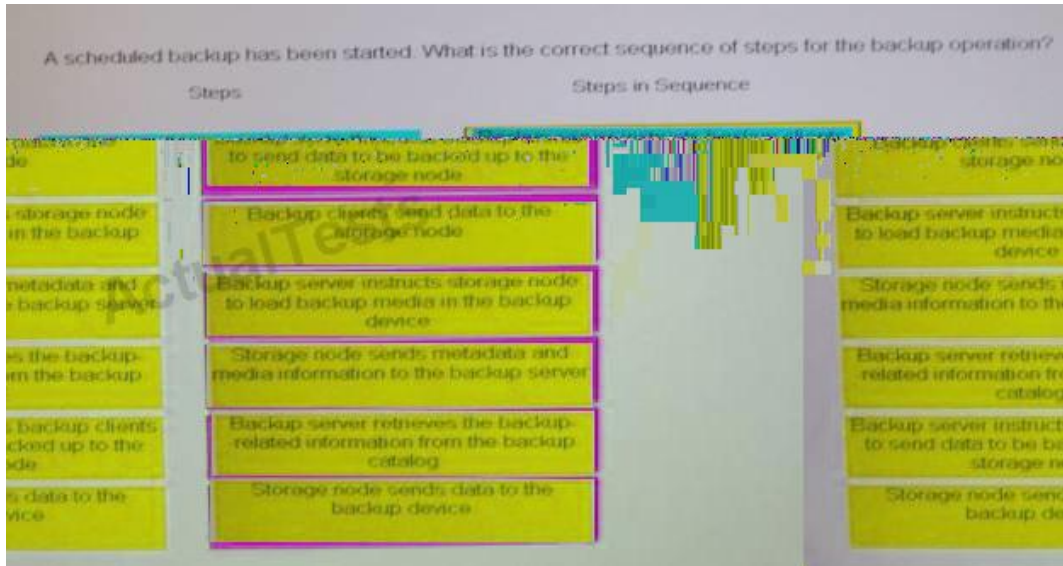
Steps	Steps in Sequence
Backup clients send data to the storage node	Step 1
Backup server instructs storage node to load backup media in the backup device	Step 2
Storage node sends metadata and media information to the backup server	Step 3
Backup server retrieves the backup-related information from the backup catalog	Step 4
Backup server instructs backup clients to send data to be backed up to the storage node	Step 5
Storage node sends data to the backup device	Step 6

Answer:

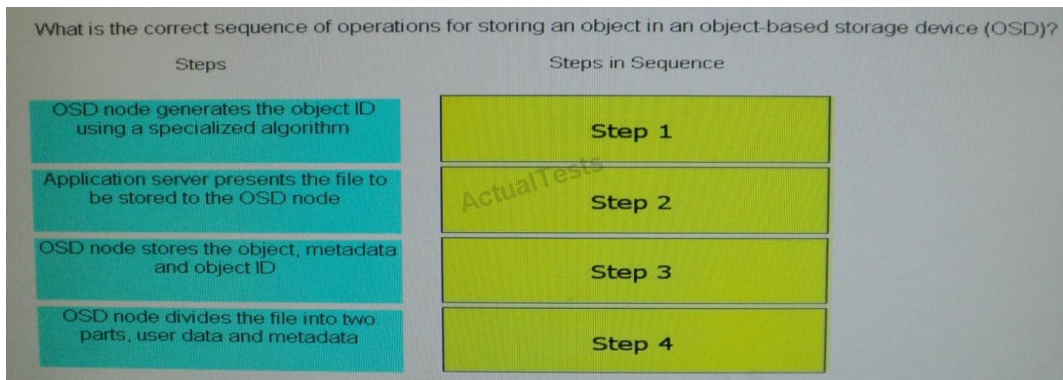
A scheduled backup has been started. What is the correct sequence of steps for the backup operation?

Steps	Steps in Sequence
Backup clients send data to the storage node	Backup server instructs backup clients to send data to be backed up to the storage node
Backup server instructs storage node to load backup media in the backup device	Backup clients send data to the storage node
Storage node sends metadata and media information to the backup server	Backup server instructs storage node to load backup media in the backup device
Backup server retrieves the backup-related information from the backup catalog	Storage node sends metadata and media information to the backup server
Backup server instructs backup clients to send data to be backed up to the storage node	Backup server retrieves the backup-related information from the backup catalog
Storage node sends data to the backup device	Storage node sends data to the backup device

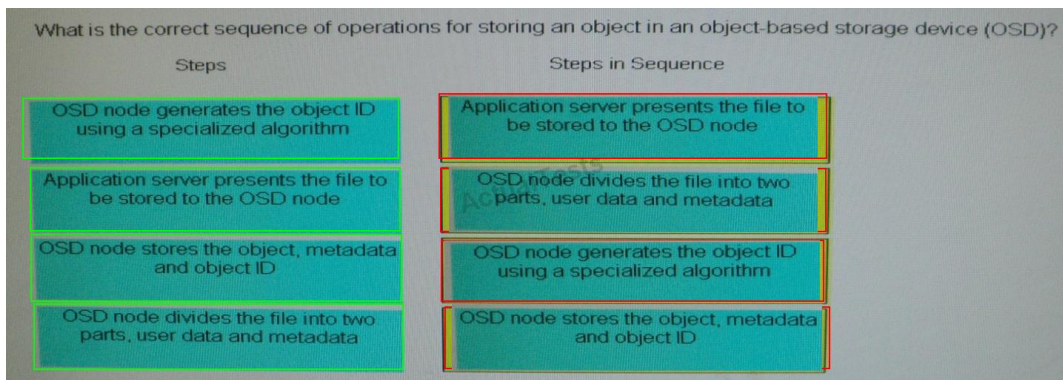
Explanation:



QUESTION NO: 120 DRAG DROP



Answer:



Explanation:

